

# DESIGN GUIDE 2

## Common Timber Stairs

A Design Guide to Manufacturing  
Safe and Compliant Staircases

© British Woodworking Federation 2017



# Contents

Introduction		4
Section 1	The regulations landscape	8
Section 2	Dimensional layout	18
Section 3	The fire protected stair and means of escape stair	39
Section 4	Material selection for timber stairs	44
Section 5	Staircase loading and jointing of components	50
Section 6	Component dimensions and data tables	55
Section 7	Bibliography, further information and index	72



**CERTIFICATED  
FIRE  
PROTECTED  
STAIR**



Note: While every effort has been made to ensure the accuracy of advice given, the BWF cannot accept liability for loss or damage arising from the use of the information supplied in this publication. All internet links are current at time of publication.

# 4 ways we'll make your life easier...



We take responsibility for measurements and drawings so you don't have to



We'll save you time, by delivering your stairs to site in half the industry standard lead time



We have a team of technical sales experts located throughout England and Wales



Our technical sales experts can provide an instant, on-site quotation for your project

## Speak to our customer team today to discuss your project

[www.twotwenty.co.uk](http://www.twotwenty.co.uk)

01283 585 198

[info@twotwenty.co.uk](mailto:info@twotwenty.co.uk)



TWOTWENTY



The British Woodworking Federation (BWF) Stair Scheme is the only accreditation and certification scheme of its kind in the UK.

The scheme covers domestic, common stairs and fire protected stairs. The standard expected of the members is high, with a drive to improve quality and safety in use. These principles are supported by an effective factory production control system and adherence to the core values laid down in the BWF Code of Conduct.

All companies within the scheme are regularly audited to ensure their production processes meet these standards, and the third-party certification for fire protected common stairs is supported by The Loss Prevention Certification Board (LPCB).

The scheme is managed by the British Woodworking Federation and includes manufacturers and approved suppliers, who also play an important part in maintaining these high standards.

All stairs manufactured under the scheme are labelled with a unique badge to ensure traceability back to the manufacturer and production processes.

Further guidance is available from:  
[www.bwfstairscheme.org.uk](http://www.bwfstairscheme.org.uk)



**CERTIFICATED  
FIRE  
PROTECTED  
STAIR**



This design guide has been prepared by the British Woodworking Federation (BWF) Stair Scheme to provide industry guidance and the minimum requirements for the manufacture of common timber stairs for the UK construction market.

The rules and regulations for the manufacture and installation of common stairs are different from stairs for private dwellings and take into account other factors such as fire safety, increased loadings and accessibility for all users. Users of common stairs may have a wide variety of requirements in order for them to safely use the stair. In addition, they may not be familiar with the stair and there may be a higher volume of users to contend with. Tiny details and dimensional limitations within the design are critical to ensuring that the stair is safe for all users and compliant to relevant regulations.

### Scope of this document

This guide is provided to assist stair designers, manufacturers and building

professionals involved in the design and specification of common timber stairs for the UK market. It draws information from a range of standards and regulations impacting upon staircases. This guide covers stair specifications for basic flights and balustrade by providing advice on suitable sections, by reference to historical data, design tables, calculation or suitable test methods.

Design and manufacture is only part of the delivery of effective staircases. Installation practices must also be adhered to as recommended by the staircase manufacturer and building designer<sup>1</sup>. The responsibility for ensuring that competent<sup>2</sup> tradespeople install the product is that of the project manager and builder.

Further information is provided in the BWF Stair Scheme Installation Guide: <http://www.bwfstairscheme.org.uk/wp-content/uploads/2015/06/stair-installation-guide-web-ready-final11.pdf>

<sup>1</sup> A designer is an organisation or individual that prepares or modifies a design for any part of a construction project. Designers include architects, consulting engineers, interiors designers, temporary work engineers, chartered surveyors, technicians, specifiers, principle contractors, specialist contractors and some tradespeople. CITB guide to CDM Industry Guidance for Designers 2015.

<sup>2</sup> Competence can be described as the combination of training, skills, experience and knowledge that a person has and their ability to apply them to perform a task safely. <http://www.hse.gov.uk/competence/what-is-competence.htm>

## Stair classification

A timber stair that is not within a private dwelling can be described in different ways. For the purpose of this design guide, definitions given in BS 5395-1, BS 6100 and BS EN 14076 shall apply, together with the following definitions, classifying stairs into the following 3 types:

- Type 1:** Self-contained dwelling units and communal areas in a block of flats, not more than 3 storeys in height and with not more than 4 self-contained dwelling units per floor accessible from one stair.
- Type 2:** Stairs within communal areas of blocks of flats or buildings, other than type 1, not subject to crowds.
- Type 3:** Stairs in all other buildings including hotels, motels.

**Type 2 & 3 are included in this guide and will be referred to as ‘common stairs’ for the purpose of simplicity.**

## Other stair type terminology from Approved Document K Appendix A)



**Private stair:** A stair intended to be used for only one dwelling.  
(not included in this publication and are the subject of BWF Stair Scheme Design Guide 1 – Domestic stairs:)  
<http://c0284814.myzen.co.uk/wp-content/uploads/2014/10/BWF-Stair-Design-Guide.pdf>

**General Access stair:** A stair intended for all users of a building on a day-to-day basis, as a normal route between levels. (included in this publication)

**Utility stair:** A stair used for escape, access for maintenance, or purposes other than the usual route for moving between levels on a day-to-day basis. (not included in this publication see page 13).

### **Why understanding staircase classification is so important**

Common timber stairs can be used in a wide variety of environments, and by people with a wide variety of requirements:

- Communal areas within a block of flats
- Healthcare facilities
- Residential care
- Educational, institutional and public buildings
- Hotels and shared accommodation
- Offices and Retail units

Designers and manufacturers of common timber stairs need to be aware of the differences in design, material specification and loading requirements to ensure that their product is safe, fit for purpose and compliant to relevant regulations and standards.

Additionally, different stair classification impacts upon the loading requirements that the stair will need to withstand in use.

# 1

## The regulations landscape

## 1. The regulations landscape

### The Building Regulations

Building regulations are the minimum mandatory standards to be achieved when constructing a staircase and they play an enormous role in the design and layout of common timber stairs. They are accompanied by a series of guidance documents, provided to assist stakeholders in fulfilling performance

requirements of the different parts of the regulations.

The power to set building regulations has been devolved to the regional governments with each producing their own guidance to compliance. The table below shows the different names and guidance documents and where they can be sourced.

Region	Document Name	Download link
England	The Building Regulations - Approved Documents	<a href="https://www.gov.uk/government/collections/approved-documents">https://www.gov.uk/government/collections/approved-documents</a>
Scotland	Technical Handbooks	<a href="http://www.gov.scot/Topics/Built-Environment/Building/Building-standards">http://www.gov.scot/Topics/Built-Environment/Building/Building-standards</a>
Wales	The Building Regulations - Approved Documents	<a href="http://gov.wales/topics/planning/buildingregs/?lang=en">http://gov.wales/topics/planning/buildingregs/?lang=en</a>
N. Ireland	Technical Handbooks	<a href="https://www.finance-ni.gov.uk/articles/building-regulations-northern-ireland">https://www.finance-ni.gov.uk/articles/building-regulations-northern-ireland</a>

**Table 1.1 Regional building regulations and guidance documents**

The above documents contain general information on the performance expected of materials and building work in order to comply with the building regulations. Building regulations are minimum standards for design, construction and alterations to virtually every building.

### Different elements of the Building Regulations

Performance elements of stair design such as protection from falling, fire safety and accessibility for all users has bearing on the design of a staircase, and details are included in the individual guidance documents that accompany different parts of the Building Regulations.

The following tables illustrate the different elements of performance and the specific guidance document where they can be sourced from. (Please note all links are current at the time of publication).

### The Building Regulations – Fire safety

Fire safety information relating to common stairs in different areas in the UK is contained in the following guidance documents and is discussed in further detail in Section 3.

Region	Document Name	Download link
<b>England</b>	Approved Document B Part 2 – Fire Safety - Buildings other than dwellinghouses (2013).	<a href="https://www.gov.uk/government/uploads/system/uploads/attachment_data/file/441669/BR_PDF_AD_B2_2013.pdf">https://www.gov.uk/government/uploads/system/uploads/attachment_data/file/441669/BR_PDF_AD_B2_2013.pdf</a>
<b>Scotland</b>	Technical Handbooks 2015 non domestic Section 2	<a href="http://www.gov.scot/Topics/Built-Environment/Building/Building-standards/techbooks/techhandbooks/th2016nondomfire">http://www.gov.scot/Topics/Built-Environment/Building/Building-standards/techbooks/techhandbooks/th2016nondomfire</a>
<b>Wales</b>	Approved Document B Part 2 – Fire Safety - Buildings other than dwellinghouses (2010)	<a href="http://gov.wales/docs/desh/publications/150827building-regs-approved-document-b2-fire-en.pdf">http://gov.wales/docs/desh/publications/150827building-regs-approved-document-b2-fire-en.pdf</a>
<b>N. Ireland</b>	Technical Booklet E (2012).	<a href="http://www.buildingcontrol-ni.com/assets/pdf/TechnicalBookletE2012.pdf">http://www.buildingcontrol-ni.com/assets/pdf/TechnicalBookletE2012.pdf</a>

**Table 1.2 Regional building regulations and guidance documents for fire safety**

## 1. The regulations landscape

### The Building Regulations - Accessibility

Accessibility is of increasing concern for both domestic and common situations and has had significant attention through the evolution in Building Regulations, and various other voluntary

building standards in recent times. Staircase layout and dimensioning is critical to this and required parameters are set out in the different guidance documents shown below.

Region	Document Name	Download link
England	Approved Document M (2010) Volume 2 Access to and use of buildings.	<a href="https://www.gov.uk/government/publications/access-to-and-use-of-buildings-approved-document-m">https://www.gov.uk/government/publications/access-to-and-use-of-buildings-approved-document-m</a>
Scotland	Technical Handbook (2016) non domestic Section 4	<a href="http://www.gov.scot/Topics/Built-Environment/Building/Building-standards/techbooks/techhandbooks/th2016nondomsafety">http://www.gov.scot/Topics/Built-Environment/Building/Building-standards/techbooks/techhandbooks/th2016nondomsafety</a>
Wales	Approved Document M (2010) Access to and use of buildings.	<a href="http://gov.wales/topics/planning/buildingregs/approved-documents/part-m-access-and-use/?lang=en">http://gov.wales/topics/planning/buildingregs/approved-documents/part-m-access-and-use/?lang=en</a>
N. Ireland	Technical Booklet R (2012) Access to and use of buildings.	<a href="http://www.buildingcontrol-ni.com/assets/pdf/TechnicalBookletR2012.pdf">http://www.buildingcontrol-ni.com/assets/pdf/TechnicalBookletR2012.pdf</a>

**Table 1.3 Regional building regulations and guidance documents for access to buildings**

### Accessibility (England)

Approved Document M Volume 1, 2015 (with 2016 amendments) categorises dwellings into three types:

Category 1: Visitable dwellings

Category 2: Accessible and adaptable dwellings

Category 3: Wheelchair accessible dwellings

This classification is relevant to stair type requirement. It depends on whether the building has a lift as its primary means of access between levels, as to whether a general access stair or a utility stair is required.

It should be noted that in instances where Approved Document M calls for a utility stair\* (see table on next page), this requirement may be overridden if the stair needs to provide means of escape in a fire, as there are differences in stair dimensional and product specification (see Section 3 – Fire safety and timber stairs).

The stair manufacturer should endeavour to seek confirmation with the principle designer to ensure the correct stair type is supplied, as this will be dependent on the fire and evacuation plan for the individual building.



## 1. The regulations landscape

Category	Dwelling Type		Clause
1	Visitable dwellings	<p>The principal communal stairs that give access to the dwelling should comply with one of the following;</p> <p>a) Where the dwelling is on an upper floor and <b>does not have lift access</b>, the stair meets the requirements of Part K for a <b>general access stair</b>.</p> <p>b) Where the dwelling is on an upper floor and <b>does have lift access</b>, the stair meets the requirements of Part K for a <b>utility stair</b>*.</p>	<p>1.32</p> <p><b>* this requirement may be overridden if the stair needs to provide means of escape in a fire, as there are differences in dimensional and product specification (see Section 3 – Fire safety and timber stairs).</b></p>
2	Accessible and adaptable dwellings	The principal communal stair that gives access to the dwelling should meet the requirements of Part K for a general access stair.	2.17
3	Wheelchair user dwelling	The principal communal stair that gives access to the dwelling should meet the requirements of Part K for a general access stair.	3.17

**Table 1.4 Accessibility (England) Stair type requirement relating to dwelling category**

### The Building Regulations – Stair dimensional layout

Staircase layout and dimensioning is critical in reducing the risk of accidents and guidance is contained within the

following documents for different areas in the UK, and is discussed in further detail in this document. (Section 2).

Region	Document Name	Download link
<b>England</b>	The Building Regulations 2013 Approved Document K Protection from falling Collision and impact	<a href="https://www.gov.uk/government/publications/protection-from-falling-collision-and-impact-approved-document-k">https://www.gov.uk/government/publications/protection-from-falling-collision-and-impact-approved-document-k</a>
<b>Scotland</b>	Technical Handbook Non Domestic Section 4.3	<a href="http://www.gov.scot/Topics/Built-Environment/Building/Building-standards/techbooks/techhandbooks/th2016nondomsafety">http://www.gov.scot/Topics/Built-Environment/Building/Building-standards/techbooks/techhandbooks/th2016nondomsafety</a>
<b>Wales</b>	The Building Regulations 2010 Approved Document K Protection from falling Collision and impact	<a href="http://gov.wales/docs/desh/publications/150827building-regs-approved-document-b2-fire-en.pdf">http://gov.wales/docs/desh/publications/150827building-regs-approved-document-b2-fire-en.pdf</a>
<b>N. Ireland</b>	Technical Handbook H Stairs, ramps, guarding and protection from impact	<a href="http://www.buildingcontrol-ni.com/assets/pdf/TechnicalBookletH2012.pdf">http://www.buildingcontrol-ni.com/assets/pdf/TechnicalBookletH2012.pdf</a>

**Table 1.5 Regional building regulations and guidance documents for protection from falling**

## 1. The regulations landscape

### The Building Regulations – Materials and workmanship

The guidance documents regarding materials and workmanship detail the

requirement for carrying out building work using the proper materials and in a workmanlike manner.

Region	Document Name	Download link
England	The Building Regulations 2010 Approved Document 7 Materials and Workmanship Regulation 7	<a href="https://www.gov.uk/government/uploads/system/uploads/attachment_data/file/443280/BR_PDF_AD_R7_2013.pdf">https://www.gov.uk/government/uploads/system/uploads/attachment_data/file/443280/BR_PDF_AD_R7_2013.pdf</a>
Scotland	Technical Handbook Non Domestic Section 0.8 Durability, workmanship and fitness of materials	<a href="http://www.gov.scot/Topics/Built-Environment/Building/Building-standards/techbooks/techhandbooks/th2016nondomgeneral">http://www.gov.scot/Topics/Built-Environment/Building/Building-standards/techbooks/techhandbooks/th2016nondomgeneral</a>
Wales	The Building Regulations 2010 Approved Document 7 Materials and Workmanship Regulation 7	<a href="http://gov.wales/topics/planning/buildingregs/approved-documents/amends-to-approved-documents/?lang=en">http://gov.wales/topics/planning/buildingregs/approved-documents/amends-to-approved-documents/?lang=en</a>
N. Ireland	Technical Handbook B Materials and workmanship	<a href="http://www.buildingcontrol-ni.com/assets/pdf/TechnicalBookletB2012.pdf">http://www.buildingcontrol-ni.com/assets/pdf/TechnicalBookletB2012.pdf</a>

**Table 1.6 Regional building regulations and guidance documents for workmanship and materials**

### Voluntary building standards – NHBC

Some building projects are subject to other voluntary building standards or client specifications that may impact further on the design, layout and material choice for the stair, over and above the advice stated in the regional building regulation guidance documents.

Further information can be found at the National House Building Council (NHBC): <http://www.nhbc.co.uk/Builders/ProductsandServices/Standardsplus2016/#1> (NHBC Standards Chapter 6.6 Staircases).

### British and European standards

There are a range of British and European standards that are relevant to stair design. Commonly referenced documents are listed in the bibliography at the end of this document.

### Construction (Design and Management) Regulations 2007 (CDM 2007)

The revised CDM regulations (2015) identifies responsibilities of designers and suppliers in regard to the safety of construction products that are supplied and installed. Construction companies will need to provide information, instruction, training and supervision, with workers having their training needs assessed against the needs of the job and employers to meet the gap in skills

knowledge through appropriate training. Crucially if you supply common timber stairs, the new CDM regulations may make it your responsibility to provide safety information regarding the use of a product throughout its installation and service life. This would include information about how to install a product correctly and providing care and maintenance instructions to the building manager or customer in order for them to be able to inspect and maintain the timber stair safely throughout its service life. The designer's role when preparing or modifying designs is to eliminate, reduce or control foreseeable risks that may occur during construction or maintenance and use of a building after it's been built. The designer also provides information to other members of the project team to help them fulfil their duties.

**Source:** CITB Industry Guidance for Designers on CDM

<http://www.citb.co.uk/health-safety-and-other-topics/health-safety/construction-design-and-management-regulations/>

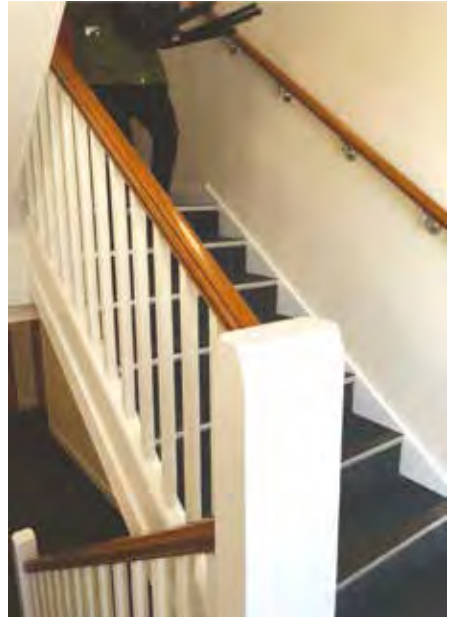
### Structural stability and ability

The imposed loads to a stair are dynamic and caused by persons moving along the stair.

The stairs will need to be designed to reduce the potential bounce and deflection or have sufficient stiffness provided from the fixings to ensure a robust and safe installation. Timber carriages are often included on the underside of stairs over 1000 mm wide to reduce deflection. (See page 58)

The serviceability limit state for a staircase shall be determined in accordance with Section 7 of Eurocode 5.

The National Annex to **BS EN 1991-1-1** Eurocode 1. Actions on structures. General actions. Densities, self-weight, imposed loads for buildings provides loading conditions for various occupancy classes. These indicate vertical loading requirements for stairs and landings, as well as horizontal loads to handrails and balustrades. See Section 6.



# 2

## Dimensional layout

## 2. Dimensional layout

This section details the key design and dimensional considerations associated with common stairs, enabling the designer to ensure that they are compliant with the relevant building regulation guidance for different parts of the UK.

### Basic staircase terminology

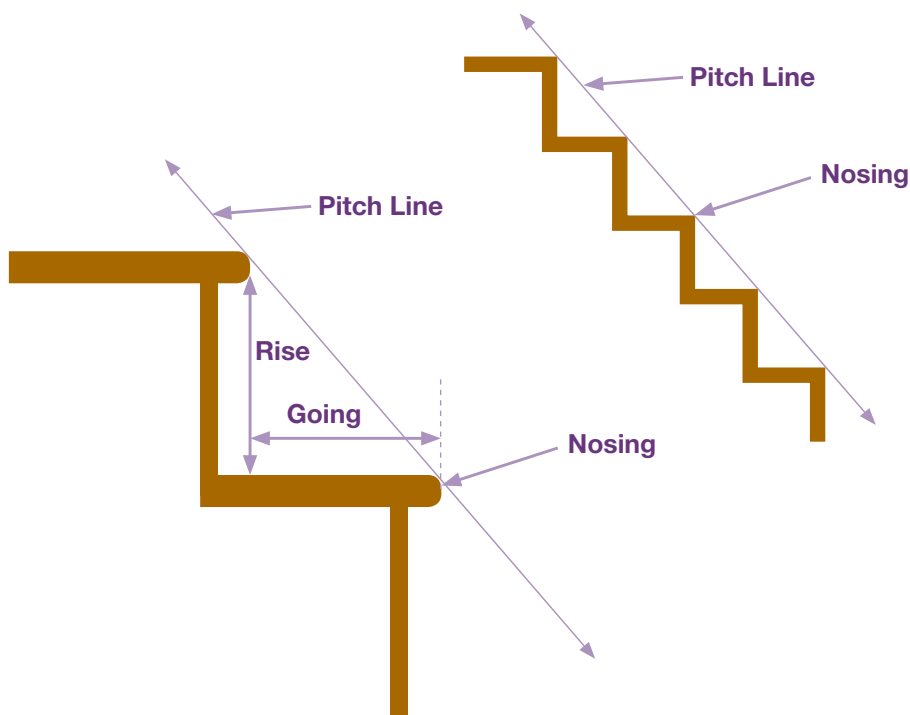


### Steepness of stairs – Pitch, rise and going

The pitch of the stair is essentially the angle of the stair. The pitch line is measured at the nosing edge as shown in the diagram below.

The total rise of the stair is from finished

floor level to finished floor level. The rise of an individual step is measured between upper surfaces of consecutive treads. The going is measured between consecutive nosings.



The normal relationship between the dimensions of rise (R) and going (G) is:  $550 \text{ mm} \leq (2R + G) \leq 700 \text{ mm}$ . However, there are limitations set by the different building regulation guidance documents. The limitations on rise, going and pitch

of common stairs are detailed on the following page. Treads cannot have a breadth (measured from the nosing to the back edge of the tread) less than the going. (i.e. consecutive treads must overlap).

## 2. Dimensional layout

### Regional variation on steepness of stair

Note that stepped gangways in assembly buildings are not classed as common stairs. Specific information regarding pitch and dimension of

stepped gangways can be found in the relevant guidance documents.  
(See Table 1.5 – Building regulations relating to stair dimensional layout for additional info).

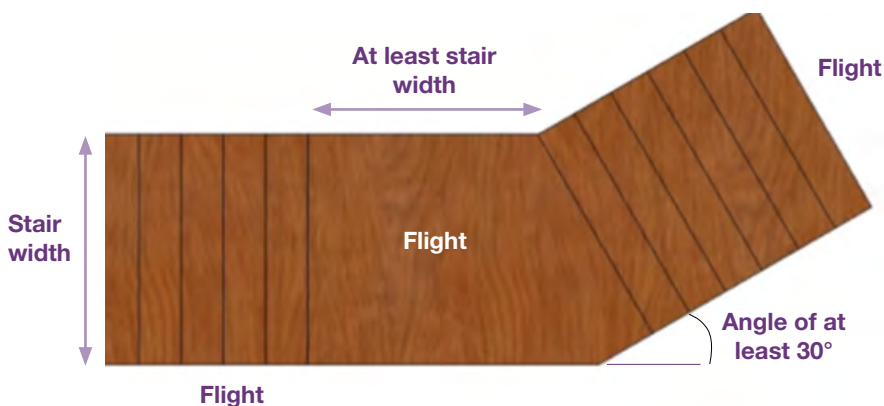
Region	Rise	Going	Max Pitch	Design Note
England	150 mm – 170 mm	250 mm – 400 mm		There are exceptions for stairs in a school, where the preferred rise is 150 mm and the preferred going is 280 mm.
Scotland	100 mm – 170 mm	Minimum 250 mm	34°	
Wales (in Wales, rise and going for 'other stairs' must comply with either a) or b)	a) 150 mm – 190 mm b) Maximum 190 mm (The normal relationship between rise and going is that twice the rise plus the going should be between 550 mm and 700 mm.)	a) 250 mm – 320 mm b) Minimum 250 mm (The normal relationship between rise and going is that twice the rise plus the going should be between 550 mm and 700 mm.)		The requirements for the steepness of stairs can alternatively be met by following the recommendations of BS 5395-1:2010. There are exceptions for institutional or assembly stairs, refer to Approved Document K (2010). (Clause 1.3,1.4,1.5) For maximum rise of stairs for disabled people, reference should be made to Approved Document M.
Northern Ireland	75 mm – 170 mm	Minimum 250 mm		It should also be noted that any stair other than private or common stair in block of dwellings has different requirements; Rise = 150 mm – 170 mm. Going = 250 mm (Minimum).

**Table 2.1 Regional variation on steepness of stair**

### Length of a flight of stairs before changing direction

Regulations in England, Northern Ireland and Wales state that where a stair has more than 36 risers in consecutive flights there must be a least one change in direction between flights of at least 30°

as shown in the diagram below. This advice for a change in direction does not appear to apply in Scotland, but see also 'length of flight' on page 23.



## 2. Dimensional layout

### Length of a flight - Maximum number of risers

There are small variations regarding the number of risers allowed in a flight as shown in the table below.

Region	Maximum number of risers
England	12, but exceptionally no more than 16 in small premises where the plan is restricted
Scotland	16 maximum, 3 minimum
Wales	12, but exceptionally no more than 16 in small premises where the plan is restricted
N. Ireland	No more than 12 in any flight

Table 2.2 Regional variation for maximum number of risers



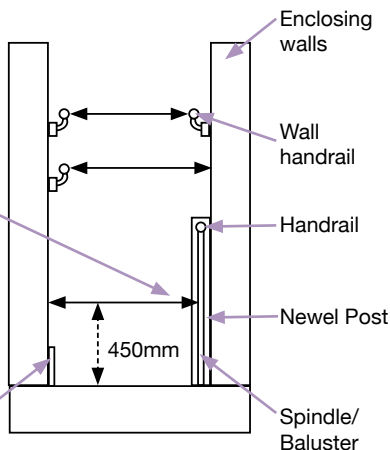
### Measuring effective clear width

The term 'effective clear width' describes the usable space between handrails and the wall or guarding.

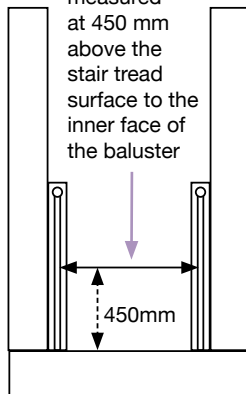
The diagram below illustrates measuring effective width in different staircase configurations.

The effective clear width between a wall and balustrade should be measured at 450 mm above the stair tread surface to the inner face of the baluster

Small intrusions such as skirting board are not included in measuring effective width



The effective clear width between two balustrades should be measured at 450 mm above the stair tread surface to the inner face of the baluster



### Dividing a Common stair into separate flights

In England and Wales, if the overall flight is more than 2000 mm wide, the stair must be divided into separate flights, defined by a handrail or divider to create flights with a minimum width of 1000 mm.

In N. Ireland a flight of steps which has a surface width wider than 1800 mm, should be divided into flights which are not wider than 1000 mm. The minimum surface width of 1200 mm then applies to each flight. In Scotland, a stair that is more than 2300 mm wide should be divided by a handrail, or handrails, in such a way that each section is at least 1100 mm and not more than 1800 mm wide.

**Width of Common stairs**

The table below illustrates the minimum effective width that must be achieved for a common stair, however for a **means of escape stair or a fire fighting stair**

there are additional considerations regarding width of stair, and these are covered in the relevant building regulation guidance regarding fire safety. (See page 40).

Region		Minimum stair width between enclosing walls, strings or upstands	Minimum width between handrails
England	Common stairs in buildings that contain flats	800 mm minimum. However, when the stair is acting as means of escape for a phased evacuation of more than 50-people, refer to Approved Document B Volume 2 Table 7 regarding width.	Note: This guidance of 800 mm is consistent with Approved Document M 2010 that requires clause 1.14 of Approved Document K 2013 to apply to common stairs within blocks of flats. Clause 1.1.5 that refers to a 1200 mm effective clear width only applies to stairs that are not common stairs in buildings that contain flats.
	Other stairs	1200 mm or the minimum width given in ADB Volume 2 for means of escape stairs (see page 8)	
Scotland		1000 mm *(see note on next page)	1000 mm *(see note on next page)
Wales		1200 mm	1000 mm
N. Ireland		1200 mm	1000 mm (Where a handrail protrudes into the surface width of a flight by more than 100 mm, the surface width should be increased accordingly. In any case, the maximum protrusion of a handrail into the surface width of a flight should be 110 mm.)

**Table 2.3 Regional variation for width of stair**

In Scotland, the effective width of a common stair shall be no less than 1000 mm however there are certain exceptions as described in the table below. In a shared residential accommodation, the effective width of stair may be 800 mm, where handrail is fitted to both sides of the flight.

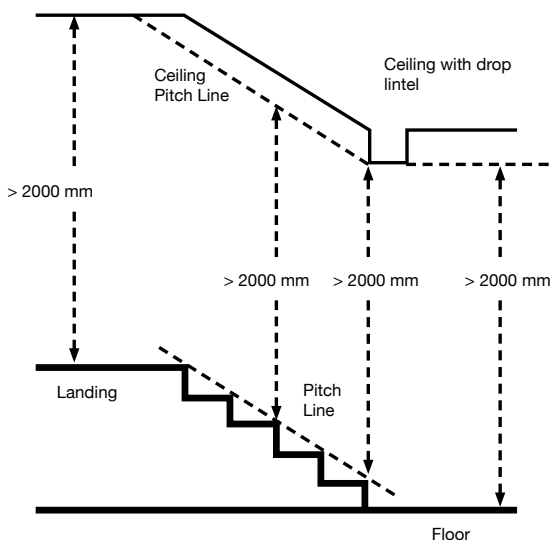
Stair wholly within residential accommodation	Escape stairs	Any other stair
<p>a. 900 mm [1], such as from 1 storey to another or between levels within a storey or,</p> <p>b. 600 mm where it serves only sanitary accommodation and/ or one room other than accessible sanitary accommodation, a kitchen or accessible bedroom</p>	Refer to recommendations in guidance to standard 2.9	Not less than 1000 mm

**Table 2.4 Width of Common stairs – Scotland**

## 2. Dimensional layout

### Headroom for stairs

For common stairs in England, Northern Ireland, Scotland and Wales, the minimum headroom must be 2000 mm. The key dimensional locations are shown in the diagram below.



### Guarding the soffit

If the soffit (underneath of the stair) is below 2000 mm from ground level, suitable guarding or barriers must be provided. It is important to note that these barriers or guarding should include low level walking cane detection for users of the stair who may be visually impaired.

risers prevent a foot or walking aid being trapped between treads and causing a fall. Additionally, some users may feel insecure using a staircase with open risers.



### Stair detailing – open risers

The risers must not be open in a common stair as this design feature is only suitable for a private stair. Closed

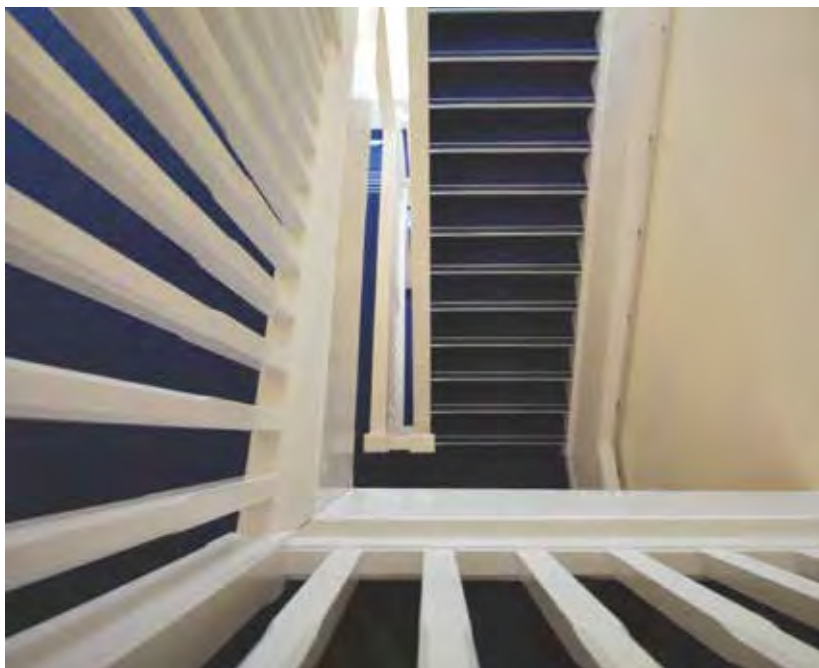
### Stair detailing – Nosing design

Tread nosing must be visually apparent and defined using a material of contrasting colour and finish.

On all common stairs, this must be no less than 55 mm wide on both the tread and the riser.

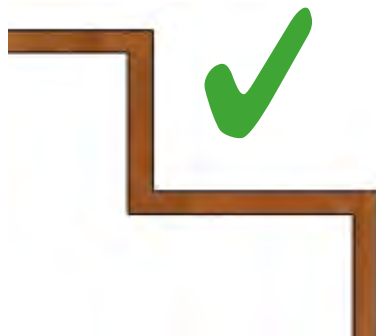
However there are exceptions to the

dimensions of the visually contrasting material for common stairs in blocks of flats in England where the building regulation guidance states that step nosing must be visually apparent and from a material that contrasts with the tread and riser material. The nosing should measure between 50 mm – 65 mm wide on the tread and between 30 mm – 55 mm deep on the face of the riser.



### Stair detailing – Protruding nosings

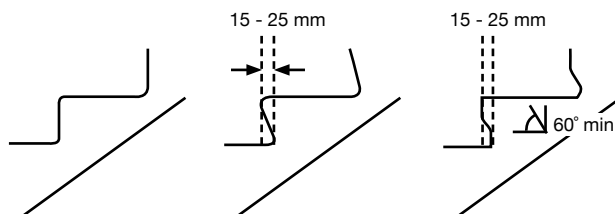
It is preferred that step nosings do not protrude over the edge of the riser on common stairs. However, if the design calls for protruding nosings, the designer of the stair needs to ensure that distance that they protrude from the face of the riser is within the dimensional constraints, detailed in the relevant building regulation guidance.



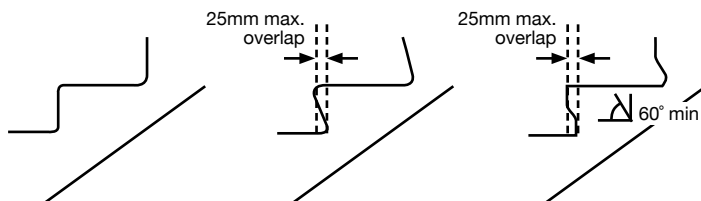
### Stair detailing – Suitable tread nosing profile

It is preferred that there is no overlap of nosing on a common stair to reduce the risk of tripping, however if required, the nosing should not protrude more than 25 mm and the design should seek to minimise trip hazards.

In Scotland and Northern Ireland, the overlap must be between 15 mm and 25 mm:



Guidance provided in England and Wales prescribes an overlap of a maximum of 25 mm:



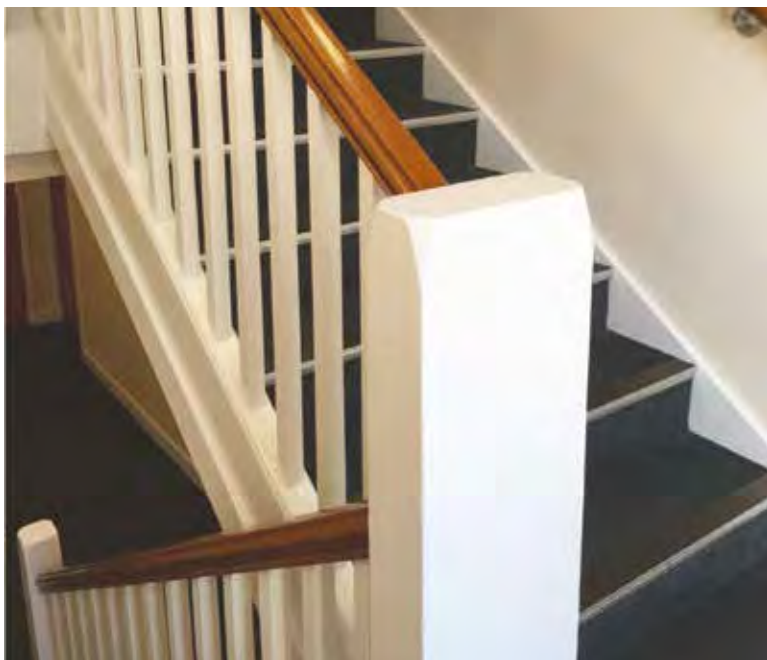
### Guarding of stairs

There are small differences between the regional building regulations, however best practice would indicate that in a building used by children under the age of 5, the stair should be designed to ensure that a 100 mm sphere cannot pass through any openings in the guarding.

The height of guarding is detailed in the relevant building regulations and

summarised in the table on the next page. Any guarding should also prevent children from being readily able to climb the guarding.

For buildings other than dwellings and for common access for buildings that contain flats, guarding should be provided at the sides of flights and landings where there are two or more risers.



## 2. Dimensional layout

### Handrails for stairs

Depending on the regional building regulation guidance, the handrail height and location differs as illustrated in the table below.

Region	Top of handrail height from pitch line or floor	Location	Continuous Handrail	Design Note
<b>England</b>	900 mm – 1100 mm * See next page	Handrails are required on both sides of stairs that are 1000 mm wide or wider.	YES * See next page	The handrail may form the top of the guarding if the heights can be matched.
<b>Scotland</b>	Between 840 mm and 1000 mm	Handrails should be installed on BOTH sides of the stair where there is a stepped change in height of 600 mm and in the instances of a ramp, where the flight is longer than 2000 mm.		<ul style="list-style-type: none"> <li>-Handrails should extend 300 mm beyond the top and bottom of the flight, except where they abut a newel post.</li> <li>-Visually contrast to any wall surface</li> <li>-Ends of handrail to be finished in a manner that reduces risk of entrapment.</li> </ul>
<b>Wales</b>	Between 900 mm and 1000 mm	Stairs should have a handrail on at least one side if they are less than 1000 mm wide and a handrail on both sides if they are wider.		
<b>Northern Ireland</b>	Between 900 mm – 1000 mm	On Common stairs less than 1000 mm wide a handrail should be installed on one side. (Note: Where handrail is required on 1 side only on a tapered tread (winder), it should be fitted to the outer side of the flight.) On Common stairs greater than 1000 mm wide a handrail should be installed on both sides.		<ul style="list-style-type: none"> <li>-Handrails should extend 300 mm beyond the top and bottom of the flight, except where they abut a newel post.</li> <li>-Visually contrast to any wall surface</li> <li>-Ends of handrail to be finished in a manner that reduces risk of entrapment.</li> </ul>

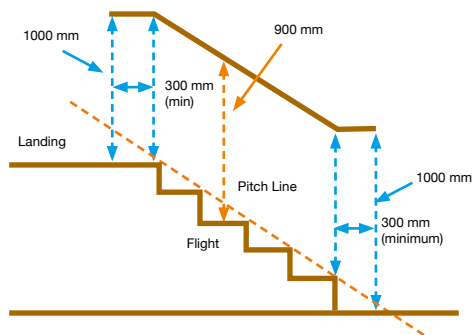
**Table 2.5 Location and height of handrails**

### Additional wall handrail guidance in England

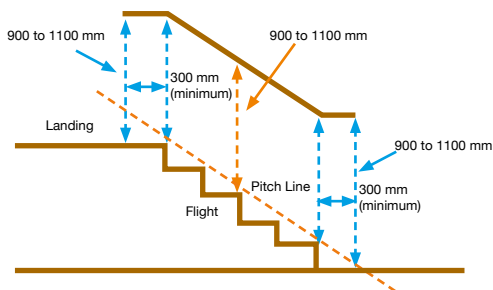
There are some further differences, key dimensions and design features of the handrail for **common stairs in blocks of flats** in England, as illustrated in the diagram below.

Handrail design for common stairs in blocks of flats:

The handrail must be 900 mm above the pitch line on the flight and at a height of 1000 mm on the landings or stair approach:



Handrail design for buildings other than dwellings the height of the handrail must be between 900 mm and 1100 mm:



Where a stepped change in level within the entrance storey of a dwelling is unavoidable, for example on severely sloping plots, if a flight consists of three or more risers, a suitable continuous handrail is required on each side of the flight and any intermediate landings. In addition, for buildings other than dwellings and for common access areas in buildings that contains flats and do not have passenger lifts, suitable continuous handrail must be installed on both sides of the stairs and landing.

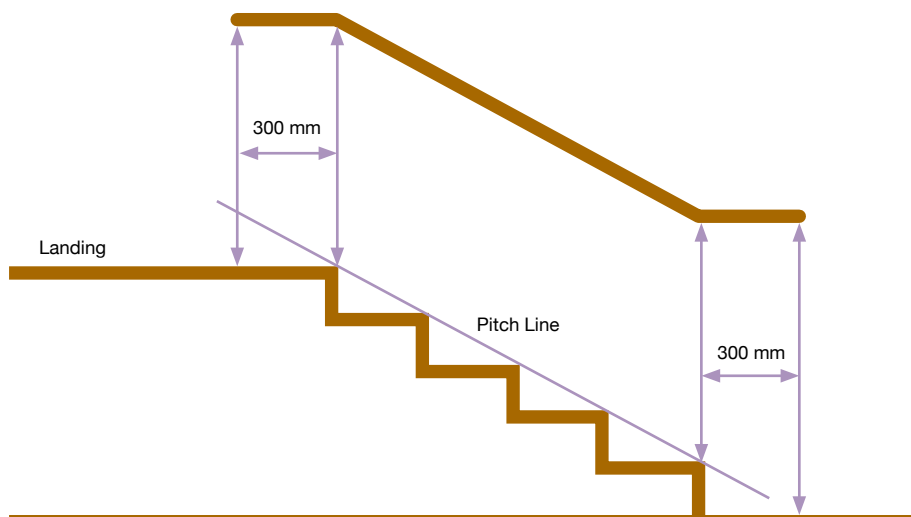
## 2. Dimensional layout

### Wall handrail extensions

The diagram below illustrates the key dimensioning of wall handrail extensions in all regional locations, however extensions must not cause an obstruction to access within the circulation area (e.g. in the instance of a door opening onto the landing).

Handrail should be of a visually contrasting material (not highly reflective), of a material that does not

have high temperature range and slip resistant. The ends of the handrail extensions should be finished in such a manner that they reduce the risk of clothing being caught. Handrail extensions are not required where the handrail abuts a newel post if it causes an obstruction into the circulation route.

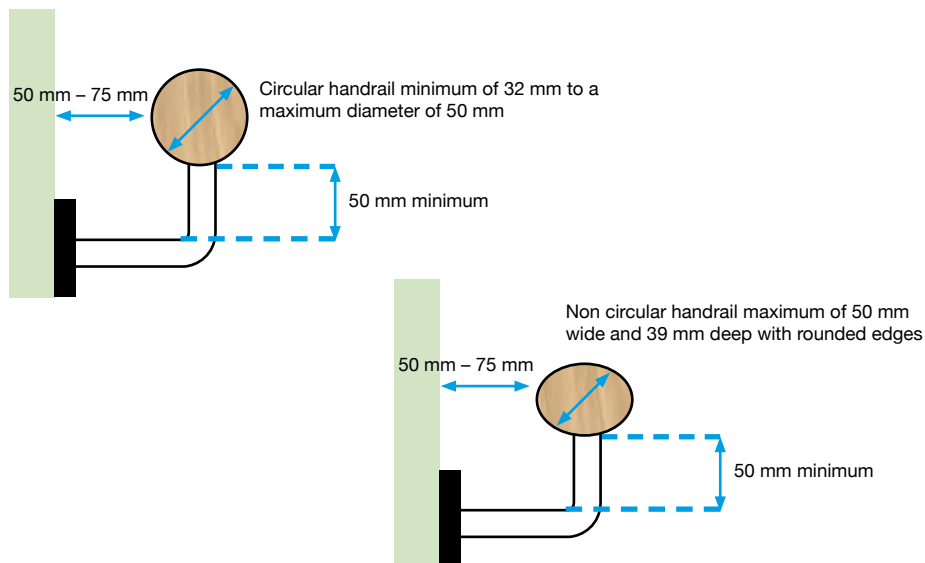


### Handrail profile

There are numerous handrail profiles available in timber, but because handrails are used to arrest falls, consideration should be given to selecting a profile that enhances graspability. Elements of profile that will enhance safety include a handrail size and shape that can afford a full grip around the entire profile or one that provides finger grips.

### Wall handrail profile

The wall handrail profile should be either circular or elliptical and mounted on wall brackets, maintaining a suitable distance from the wall as shown in the diagrams below.

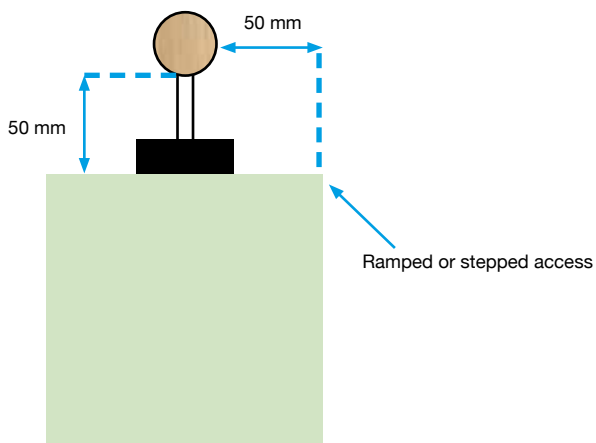
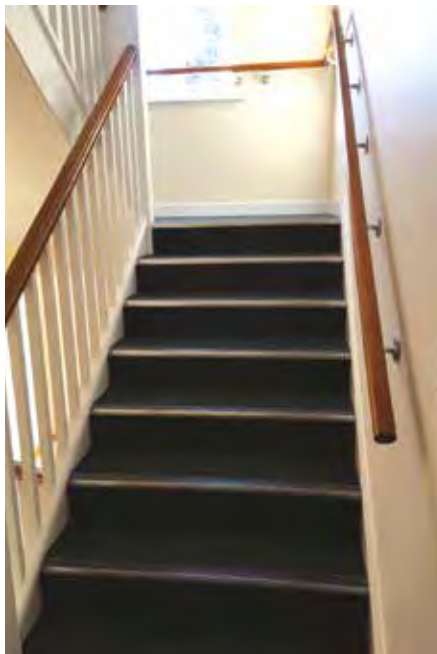
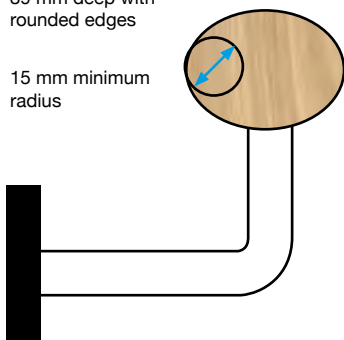


## 2. Dimensional layout

### Wall and guarding – handrail fixing position

Non circular  
handrail maximum  
of 50 mm wide and  
39 mm deep with  
rounded edges

15 mm minimum  
radius



### Landings

A stair landing should be provided at the top and bottom of every flight. A single landing may be common to 2 or more flights, and be level. It should have an effective width of not less than the effective width of the stair flight it serves, and be clear of any door swing or other obstruction.

The minimum length of a stair landing, measured on the centreline of travel, should be either 1200 mm or the effective width of the stair, whichever is less. However, where on an intermediate landing, a change of direction of 90° or more occurs, the centreline length need not be measured if the effective width of the stair is maintained across the landing.

In England and Wales, Northern Ireland landings should be provided at the top and bottom of every flight.

This advice for a change in direction does not appear to apply in Scotland, however a landing provides a place for less able users of the stair to rest. The width and the length of the landing should be at least as great as the smallest width of the flight. The landing may include part of the floor of the building. (For landing providing change of direction with more than 36 risers in a consecutive flight, see page 19).

In Northern Ireland, to afford safe passage, the unobstructed length of each landing should be not less than 1200 mm clear of any door swing onto it.

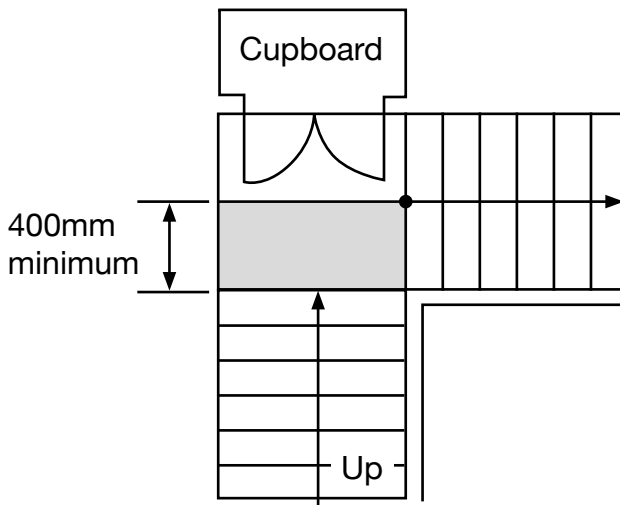




### Landing obstructions

To afford a safe passage landings should be level and clear of any permanent obstructions. On occasion, there will be doors that open onto the landing. In this case the unobstructed length of the landing must be maintained.

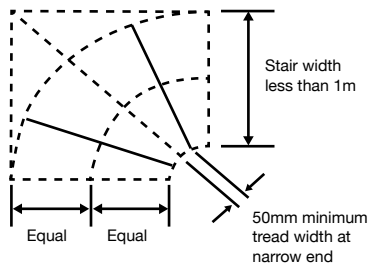
In England, Wales and Northern Ireland, a door to a cupboard or a duct opening onto the landing is allowed, as long as the door is kept locked or shut in normal use and a free floor space of a minimum of 400 mm is maintained when the door or doors are opened at the top and the bottom of the stair.



### The use of tapered treads to change direction

Using winder treads is restricted to stairs with a width on under 1000 mm so this method of changing direction on a stair is not always appropriate for common stairs.

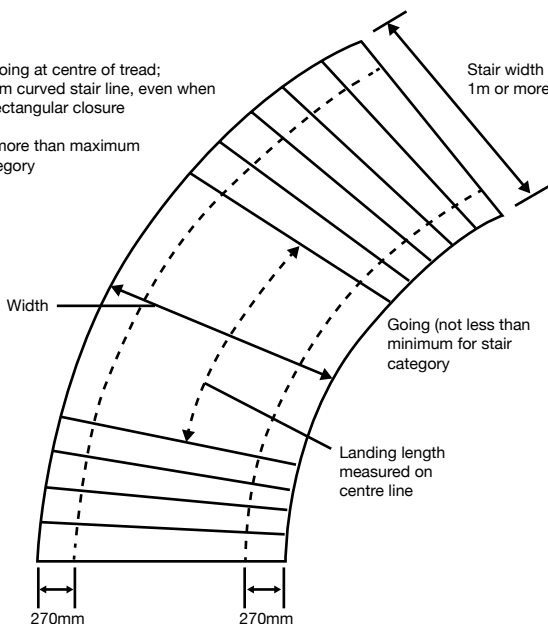
For stair in excess of 1000 mm wide, a change of direction can be afforded by either a landing or the use of tapered treads. Both methods (< 1000 mm and > 1000 mm width) are illustrated in Approved Document K (England 2013) (diagram 1.9) and is designed to afford sufficient going on each tread and effective width.



Measured going at centre of tread; measure from curved stair line, even when tread is in rectangular closure

Going (not more than maximum for stair category)

Stair width 1m or more



# 3

## Fire safety and timber stairs

Additional information regarding staircases, fire safety and their role in the evacuation and firefighting of a building can be found in the regional building regulations.

The common staircase within a building is often part of the means of escape route from the building in the instance of fire evacuation. For information about means of escape stairs, refer to the appropriate building regulation guidance documents (see page 10).



**CERTIFIED  
FIRE  
PROTECTED  
STAIR**



#### Fire protected common stairs

In some communal situations, the timber staircase is an important feature in fire safety from both the evacuation and firefighting perspective.

The design of a fire protected common stair is vastly different from a normal stair as it needs to maintain structural integrity in the event of a fire for evacuation and access to the building by the emergency services.

It is of the highest importance that fire protected common stairs are specified, designed and installed by a certified manufacturer to ensure performance in the event of a fire.

Only staircases that have been tested in accordance to BD2569 and accredited by an independent notified body should be used in this situation. You should also check that your manufacturer is accredited to supply fire protected timber staircases and that the staircase carries the scheme label.

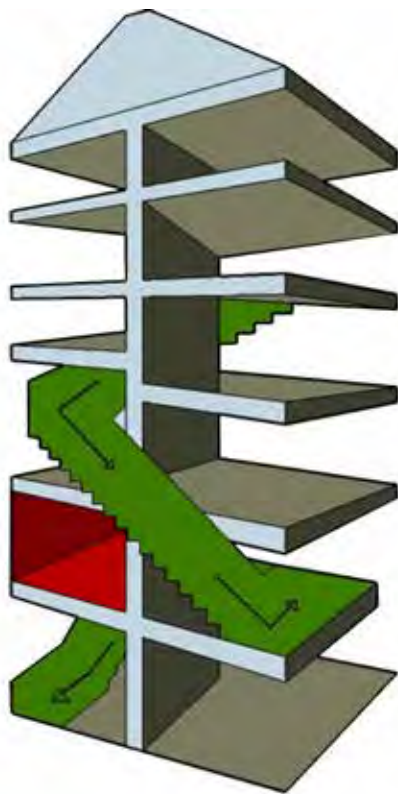
#### Fire resistance for compartmentation

Fire compartmentation of a timber stair is often provided by the fitting of a fire resistant covering to the underside of the stair. The chosen materials and fixing system used for fire compartmentation should be specified by the architect or lead building designer as it will be in synergy with the rest of the passive and active fire protection and compartmentation of a building. The lead architect or building designer should liaise with the stair manufacturer at the very early stages of the design process to make the manufacturer aware of any additional coverings for this purpose to ensure that it does not impact on the stair design.

If it is necessary to carry out a fire resistance test the appropriate standard to follow is BS EN 1365-6.

#### Reaction to fire

This characteristic is not required for common stairs. It is generally accepted that timber is classed as a Category E product under BS EN 13501-1 unless given a fire retardant surface coating.



#### Why specification is key

The building designer, building control and fire officer will advise on the level of fire performance required.

It is highly recommended that the building control inspector and fire officer approves the design and specification of the stair prior to order, manufacture and installation.

**Checks should be made at every stage of the installation process to ensure that fire protection of the stair or the fire compartmentation of the surrounding building fabric is not compromised.**

The image to the right shows a fire protected timber staircase manufactured by an accredited BWF Stair Scheme member after the completion of testing in accordance to BD2569 (See page 40).



### 3. The fire protected stair and means of escape stair

#### Regulation 38 and handover of information

Regulation 38 states that fire safety information must be handed to **'Responsible Person'** at the completion of a project, or when the building or extension is first occupied. It places the responsibility of fire safety for the building and its users to a named individual.

In order for the Responsible Person to carry out future inspections and maintenance of common timber fire protected stairs, it is important that the correct information such as fire certificate, maintenance instructions and traceability to the manufacturer and specification is handed to them. The BWF stair scheme label provides that traceability.

#### Third party accreditation – Proving product performance

When common stairs are required to provide fire protection, the building designer or main contractor will be required to provide third party independent evidence to their customer, building control or the fire officer as proof of product performance, to achieve building compliance approval and sign off.

Where fire performance documentation is required for products manufactured under the BWF Stair Scheme, the staircase should be independently certificated by the Scheme's certification partner the Loss Prevention Certification Board (LPCB). All staircases manufactured by accredited scheme members will carry the Scheme Badge to prove that it has been manufactured in accordance to specification.



**CERTIFICATED  
FIRE  
PROTECTED  
STAIR**



Unique  
traceability  
number

Manufacturer  
contact details



# 4

## Material selection

## 4. Material selection for timber stairs

This section focuses on appropriate material selection and performance characteristics for timber materials included in common stairs, focusing on specification, moisture content and strength classification.

### Durability of timber and moisture content

The environmental conditions will affect the moisture content of timber and wood-based timber stair components, and both factors will then impact on durability. The indicative moisture content values of timber stairs in a heated and unheated internal.

Location	Moisture content range	Approximate relative humidity
Internal use – heated	7% to 11%	50%
Internal use – unheated	10% to 14%	65%

**Table 4.1 Durability of timber and moisture content**

### Timber - Mechanical strength

Mechanical strength of timber used in a common stair is important, but the selection of timber and wood-based products is usually determined by non-structural grading requirements.

There is no direct relationship between strength grading rules and joinery grades; however, the tabulated information in this section can be directly related to the particular species listed. (See page 46).

The information contained within the tables in this section should be used to identify an acceptable minimum non-structural grade level to be used for the various component parts of a stair. In section 6 containing the component data tables, the grade of timber becomes relevant to the size of components.

### Species selection

The quality or grade of the timber is important and the particular grade required to achieve a classification within a strength class is given in BS EN 1912:2012, Structural Timber. Strength classes. Assignment of visual grades and species.

A list of timber species commonly used for staircases is given in table 4.2. This list should not be considered exhaustive, but if a species is not on the list, manufacturers should check properties of species and grade chosen to ensure that performance has been proven through calculation or test evidence.

### Species and strength classification

Strength Classes in table 4.2 are taken from BS EN 1912:2012. Structural Timber. Strength classes. Assignment of visual grades and species.

Common name	Strength class
American black walnut	D30
European oak	D30
American red oak	D40
American white oak	D50
Meranti	variable
Sapele	D40
Beech	D40
American black cherry	D30 (guide value)
Yellow poplar	D40 (guide value)
American white ash	D35
Caribbean pitch pine	C27
Douglas fir	C24
European larch	C24
European redwood	C24
European whitewood	C24
Hemlock	C24
Parana pine	C24
Radiata pine	C24
Southern yellow pine	C24



**Table 4.2 Species and strength class**

### Engineered timber stair components

The term 'engineered timber' refers to stock that is manufactured from many different pieces of short lengths of timber, fingerjointed and / or laminated together to create larger stock.

There are many advantages of using engineered timber components within a staircase, such as providing a defect free paintable surface, sourcing larger stock than readily available from solid timber in an economic fashion, and environmental advantages of utilising timber that would otherwise be discarded.

Timber components engineered in this manner cannot be strength graded by visual inspection and there is little published data available regarding its equivalent classification.

Users of engineered timber components should seek assurance and accredited documentation from their supplier that the components have been tested. A manufacturer should carry out checks to ensure the material is suitable to be used for structural performance within a timber staircase, by way of current and independent accredited testing.

### Wood based components

Wood-based panel products such as plywood, particle board, Oriented Strand Board (OSB) or fibre boards such as Medium Density Fibreboard (MDF), are often used within common timber staircases inside buildings.

The standards that refer to the minimum specification for these different types of panel products, acceptable in a heated internal environment is shown in the table 4.3.

Board Type	Internal Heated Environment
Plywood	BS EN 636-1, 2, 3
Particle Board	BS EN 312-4
Oriented Strand board	BS EN 300 (Type OSB/2)
Fibreboards	BS EN 622-2 (Type HB.LA)

**Table 4.3 Standards relating to wood based panel products**

### Non-timber materials

#### Adhesives

Adhesives used in the manufacture and installation of the timber staircases should be selected as appropriate for the environment. The minimum performance level for internal adhesives should be at least Class D3 from BS EN 204 or Class C1 of BS EN 12765.



#### Glass Components

Glass components are sometimes incorporated into common timber staircases. This guide does not provide information on the specification or use of glass or associated fixings that are used in these situations, however additional advice can be sought from your BWF Stair Scheme manufacturer to ensure the correct specification of glass is supplied. An accredited glass manufacturer will be able to provide specification and loading requirements for their product, as well as compatible and robust fixing systems.

Any fixing system used to connect components must be manufactured by an accredited company and test evidence should be provided to ensure that the component is used within its scope for structural use. If test evidence is not available, alternative product should be sourced or the product referred to a competent person with structural engineering knowledge for testing and evaluation.

When metal components come into contact with some timbers that contain certain extractives, corrosion can occur. Checks should be made to ensure material and finish of metal components are compatible. Any metal component used within a timber stair designed in accordance to this guide should be capable of achieving the appropriate corrosion resistance when subject to the neutral salt spray test specified in BS EN 1670. The minimum class should be Class 2 for all heated environments and Class 3 for all unheated environments.

#### Metal Components

Metal components or mechanical fixings are often used to connect timber stair components together. Components of the stair and fixings that provide structural support such as screws, nails and bolts, should be specified and selected in accordance with Eurocode 5 and CE marked for structural use.

## 4. Material selection for timber stairs

### Validation of performance of non-timber components

When referencing test evidence to validate an external supplier's claim, the responsible person in charge of the design and manufacture of the staircase should be aware that evidence needs to be provided of the component working within the system of the staircases in its entirety, not in isolation.

As an example, in the instance of a metal fixing bracket for a glass balustrade, the bracket itself will only perform if used with compatible and tested components within the scope such as the correct glass specification and thickness and screw specification.

Other materials used within timber staircases are not covered by this guidance and reference should be made to a competent person with structural engineering knowledge of material performance and staircase design to ensure performance.





# 5

## **Staircase loading and jointing of components**

**This section focuses on the loading requirements for common staircases and the jointing of components.**

**Loadings**

The imposed loadings the tables on this page refer to EN 1991-1-1:2002 (+ UK National Annex) together with the additional guidance published in PD 6688-1-1:2011 for occupancy classification. However it should

be noted that the data tables (page 57-69) are based on a uniformly distributed loading of 2 kN to align with the UK timber flooring industry. The concentrated point load is applied at the position that gives the most onerous requirement.

Type of Load	Type 2	Type 3
Uniformly distributed load (UDL) qk (kN/m <sup>2</sup> )	3.0 kN/m <sup>2</sup>	4.0 kN/m <sup>2</sup>
Concentrated Load (Qk (kN)	4 kN	4 kN

**Loading to strings, treads and landings**

Type of Load	Type 2	Type 3
Uniformly distributed load (UDL) qk (kN/m <sup>2</sup> )	3.0 kN/m <sup>2</sup>	4.0 kN/m <sup>2</sup>
Concentrated Load (Qk (kN)	4 kN	4 kN

**Table 5.1 Loadings to string treads and landings EN 1991-1-1:2002 (+ UK National Annex)**

### Horizontal loads to handrails and balustrades

#### Displacement of Handrail

Total displacement of a handrail should not exceed 25 mm. If this is not achievable, the handrail should be

capable of withstanding 2.5 times the applied load during single test, without failure. The table below illustrates the different loads that different parts of the baluster must withstand for type 2 and type 3 stairs.

Occupancy Class	Horizontal UDL to handrail (UK NA Table NA8) qk (kN/m)	Horizontal UDL applied to infill (PD 6688-1-1 Table 2) (kN/m <sup>2</sup> )	Horizontal concentrated load (PD 6688-1-1 Table 2) (kN)
Type 2 & 3	0.74 kN/m length	1.0 kN/m <sup>2</sup>	0.5 kN

**Table 5.2 Loadings to handrails EN 1991-1-1:2002 (+ UK National Annex)**

The point load is applied at the point that gives the most onerous requirement. Where individual balusters are used, each should be capable of resisting half of the concentrated load.

### Jointing of components in a timber staircase

#### Treads and risers

Timber members of more than one piece should be jointed as specified in BS 1186-2.

Risers should be fixed to the edge of the lower tread with adhesive and a mechanical fixing at centres not exceeding 150 mm. Penetration should be not less than 2 times the riser thickness.

The top of each riser should be located into a groove in the underside of the tread with a depth of a third of the tread thickness. This joint should be further supported by angle blocks 75 mm long and 38 mm width on the shorter edges, glued to the riser and tread. The number of blocks will vary according to the width of the stair.

For stairs with a width of between 990 mm and 1200 mm (and tapered treads over 1200 long), should have a minimum of six 6 angle blocks. (See page 58). An additional timber carriage must be included on the underside of the tread and riser as discussed on page 56.

#### Strings

Strings should be housed to receive the treads and risers to a minimum depth of 12 mm or 0.4 the string thickness, whichever is the greater.

These housings should be tapered to receive wedges to support the tread and riser. The wedges should be fitted with adhesive to form a rigid joint.

Where strings are fitted into newels, the ends of the strings should have tenons formed to fit into the newels. The tenons should be not less than 12 mm thick and not less than 45 mm long. However, where two strings are joined to a newel one or both tenons may be haunched to allow both tenons to be accommodated.

### Jointing of components in a timber staircase continued

#### Newels

The mortise joint in a newels should be housed not less than 12 mm deep receive the ends of the treads and risers and should be morticed for strings and handrails as required. Intermediate newels should always be manufactured in one part unless test evidence exists to prove that the two part newel can withstand relevant loadings.

#### Handrails and Balustrades

Handrails and balustrades should be designed in accordance with BS 5395-1 and the relevant regional building regulations.

The handrail should be suitably fixed into the newel or intermediate newel using an appropriate and tested mechanical fixing or mortise and tenon joint.

The jointing of the baluster into the underside of the handrail and the base plate should be of a design suitable to withstand the handrail loading requirements. (See page 52).

#### Demountable Components

In order to facilitate the movement of large items within the building it may be necessary to design the stairs with demountable handrails and newels. These components and their associated fixing systems must still be designed to the same loading criteria as fixed components.

For common stairs, if components are designed to be removable, the design should be approved by a competent person with structural engineering knowledge and staircase design to ensure compliance and performance.

# 6

## Component dimensions and data tables

### Component dimensions

Where component sizes cannot be determined by prescriptive data, calculations and testing should be carried out by a qualified structural engineer to prove performance.

### Guide to using data tables

The data tables are based on a uniformly distributed loading of 2 kN to align with the UK timber flooring industry. (See page 51)

Contained within this section are a series of data tables to assist the user in determining size of finished components of a common timber stair.

Each table references the component dimension in accordance to:

- Type classification of stair (Type 2 or 3). (See page 6)
- Strength classification of timber. (See page 48)
- Component dimensions
- Pitch of staircase

The following conditions must be met for the information in the data tables to apply:

- Incorporating a supporting timber carriage into the stair design (see page 58)
- Risers manufactured from 15 mm thick plywood or 15 mm thick MDF.

### Component dimensions of the balustrade assembly

The balustrade assembly is made from a number of different components. For common stairs (type 2 and 3), the following minimum dimensions should apply to the individual balusters, newel posts and handrail, unless specific test evidence can be provided. Components that are outside of the limitations stated below should be tested by a competent individual to prove performance.

#### Individual Balusters

Balusters to 1100 mm high must be a minimum of 41 mm x 41 mm.

#### Handrail profile and length

Handrail profiles vary greatly (see page 34) but should be a minimum of 68 mm x 45 mm or 57 mm x 57 mm and provided with a profile that aids graspability. A length of handrail either on a flight or on a landing should have intermediate newel posts fitted at a maximum distance of 2000 mm apart to reduce deflection of the balustrade assembly unless specific test evidence exists to prove loading capability.

#### Newel Post

Main newel posts and intermediate newel posts should be a minimum of 90 mm x 90 mm. Intermediate newels should always be manufactured in 1 part unless test evidence exists to prove that the 2 part components can withstand relevant loadings.



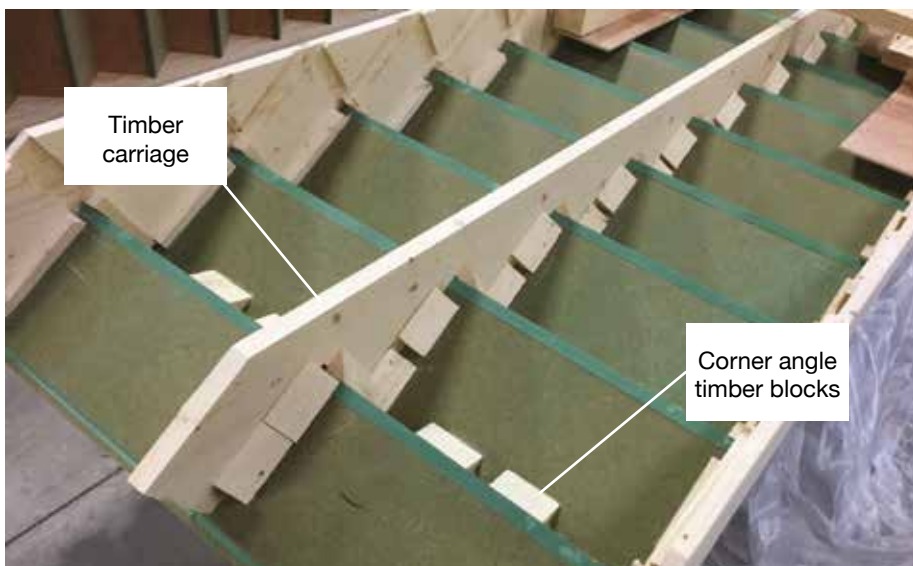
### Incorporating a supporting timber carriage

All the data tables on pages 59-71 are calculated on the design incorporating a full length timber carriage underneath the centreline of the treads and risers, as this element helps to reduce deflection of both individual components and along the entire length of the flight.

Omitting the timber carriage has significant impact on the overall structural ability, subsequent safety of the stair and the information given in the data tables is no longer applicable.

If the design calls for no timber carriage to be incorporated, the designer should consult a competent person with structural engineering knowledge of material performance and staircase design to ensure performance.

The thickness of the timber carriage should be the same as the thickness of the outer strings and should run the full length of the flight. It should be fixed using adhesive along the centreline with corner angle blocks, underneath the treads and risers, and adequately supported and fixed at each end.



### Tread Thickness

Data based in inclusion of timber carriage (see page 58) and 2 kN UDL (see page 51).

The following tables demonstrate the thickness of tread component over a variety of different tread lengths and over

a variety of different timber strength classifications (see page 46 for different species classification). The tread thicknesses stated in these tables are based on a common stair containing full risers manufactured from 18 mm plywood. The sizes tabulated are calculated using EN 1995-1-1 (Eurocode 5) assuming the tread is a simply supported beam subjected to the loads given in Table B.1. Reduced tread sizes may be achieved by carrying out a more rigorous structural analysis stairwell as a system.

Grade of timber	Length of tread	With a tread going of between 250-400mm
<b>C24</b>	900 mm	18 mm
	1000 mm	18 mm
	1100 mm	20 mm
	1300 mm	22 mm

Grade of timber	Length of tread	With a tread going of 250 mm
<b>C27</b>	900 mm	18 mm
	1000 mm	18 mm
	1100 mm	19 mm
	1300 mm	21 mm

Grade of timber	Length of tread	With a tread going of 250 mm
<b>D30</b>	900 mm	18 mm
	1000 mm	18 mm
	1100 mm	18 mm
	1300 mm	22 mm

Grade of timber	Length of tread	With a tread going of between 250-400mm
<b>D40</b>	900 mm	18 mm
	1000 mm	18 mm
	1100 mm	18 mm
	1300 mm	18 mm

Grade of timber	Length of tread	With a tread going of between 250-400mm
<b>D50</b>	900 mm	18 mm
	1000 mm	18 mm
	1100 mm	18 mm
	1300 mm	22 mm

**String dimensions: Grade C24 Type 2** Data based in inclusion of timber carriage (see page 58) and 2 kN UDL (see page 51)

### Grade C24 Type 2

#### 32 degrees

String Depth	String Thickness			
	28mm	32mm	38mm	44mm
220mm	3124	3266	3458	3631
225mm	3195	3340	3537	3714
245mm	3478	3637	3851	4044
275mm	3904	4082	4323	4539
295mm	4188	4379	4637	4869
320mm	4543	4750	5030	5282
350mm	4898	5121	5423	5695

#### 34 degrees

String Depth	String Thickness			
	28mm	32mm	38mm	44mm
220mm	3147	3290	3484	3659
225mm	3219	3365	3564	3742
245mm	3505	3664	3880	4075
275mm	3934	4113	4356	4574
295mm	4220	4412	4672	4906
320mm	4578	4786	5068	5322
350mm	4935	5160	5464	5738

#### 36 degrees

String Depth	String Thickness			
	28mm	32mm	38mm	44mm
220mm	3173	3317	3513	3689
225mm	3245	3393	3593	3773
245mm	3534	3694	3912	4108
275mm	3966	4147	4391	4611
295mm	4255	4448	4711	4946
320mm	4615	4825	5110	5366
350mm	4976	5202	5509	5785

#### 38 degrees

String Depth	String Thickness			
	28mm	32mm	38mm	44mm
220mm	3201	3347	3544	3721
225mm	3274	3423	3624	3806
245mm	3565	3727	3947	4144
275mm	4001	4183	4430	4652
295mm	4292	4488	4752	4990
320mm	4656	4868	5155	5413
350mm	5020	5248	5558	5836

## 6. Component dimensions and data tables

**String dimensions: Grade C24 Type 3** Data based in inclusion of timber carriage (see page 58) and 2 kN UDL (see page 51)

### Grade C24 Type 3

#### 32 degrees

String Depth	String Thickness			
	28mm	32mm	38mm	44mm
220mm	2835	3003	3180	3340
225mm	2900	3072	3253	3416
245mm	3157	3345	3542	3719
275mm	3544	3754	3975	4175
295mm	3802	4027	4265	4478
320mm	4124	4368	4626	4858
350mm	4511	4778	5060	5313

#### 34 degrees

String Depth	String Thickness			
	28mm	32mm	38mm	44mm
220mm	2868	3026	3204	3365
225mm	2933	3095	3277	3441
245mm	3193	3370	3569	3747
275mm	3584	3783	4006	4206
295mm	3845	4058	4297	4512
320mm	4171	4402	4661	4894
350mm	4562	4814	5098	5353

#### 36 degrees

String Depth	String Thickness			
	28mm	32mm	38mm	44mm
220mm	2903	3051	3231	3392
225mm	2969	3120	3304	3470
245mm	3233	3398	3598	3778
275mm	3629	3814	4038	4241
295mm	3892	4091	4332	4549
320mm	4222	4438	4699	4935
350mm	4618	4854	5140	5397

#### 38 degrees

String Depth	String Thickness			
	28mm	32mm	38mm	44mm
220mm	2941	3078	3259	3422
225mm	3008	3148	3333	3500
245mm	3275	3427	3630	3811
275mm	3677	3847	4074	4278
295mm	3944	4127	4370	4589
320mm	4278	4477	4741	4978
350mm	4679	4896	5185	5445

**String dimensions: Grade C27 Type 2** Data based in inclusion of timber carriage (see page 58) and 2 kN UDL (see page 51)

### Grade C27 Type 2

#### 32 degrees

String Depth	String Thickness			
	28mm	32mm	38mm	44mm
220mm	3170	3314	3510	3686
225mm	3242	3390	3590	3769
245mm	3530	3691	3909	4104
275mm	3963	4143	4387	4607
295mm	4251	4444	4706	4942
320mm	4611	4821	5105	5361
350mm	4971	5198	5504	5780

#### 34 degrees

String Depth	String Thickness			
	28mm	32mm	38mm	44mm
220mm	3194	3340	3536	3714
225mm	3267	3415	3617	3798
245mm	3557	3719	3938	4136
275mm	3993	4174	4421	4642
295mm	4283	4478	4742	4980
320mm	4646	4858	5144	5402
350mm	5009	5237	5546	5824

#### 36 degrees

String Depth	String Thickness			
	28mm	32mm	38mm	44mm
220mm	3220	3367	3565	3744
225mm	3294	3443	3646	3829
245mm	3586	3750	3971	4169
275mm	4025	4209	4457	4680
295mm	4318	4515	4781	5020
320mm	4684	4897	5186	5446
350mm	5050	5280	5591	5871

#### 38 degrees

String Depth	String Thickness			
	28mm	32mm	38mm	44mm
220mm	3249	3397	3597	3777
225mm	3323	3474	3679	3863
245mm	3618	3783	4006	4206
275mm	4061	4246	4496	4721
295mm	4356	4555	4823	5065
320mm	4725	4940	5232	5494
350mm	5095	5326	5640	5923

## 6. Component dimensions and data tables

**String dimensions: Grade C27 Type 3** Data based in inclusion of timber carriage (see page 58) and 2 kN UDL (see page 51)

### Grade C27 Type 3

#### 32 degrees

String Depth	String Thickness			
	28mm	32mm	38mm	44mm
220mm	2915	3048	3228	3389
225mm	2982	3117	3301	3466
245mm	3247	3394	3595	3775
275mm	3644	3810	4035	4237
295mm	3909	4087	4328	4545
320mm	4241	4434	4695	4930
350mm	4638	4849	5135	5392

#### 34 degrees

String Depth	String Thickness			
	28mm	32mm	38mm	44mm
220mm	2938	3071	3252	3415
225mm	3004	3141	3326	3493
245mm	3271	3420	3622	3803
275mm	3672	3839	4065	4269
295mm	3939	4118	4361	4579
320mm	4273	4467	4731	4968
350mm	4673	4886	5174	5433

#### 36 degrees

String Depth	String Thickness			
	28mm	32mm	38mm	44mm
220mm	2962	3096	3279	3443
225mm	3029	3167	3353	3521
245mm	3298	3448	3652	3834
275mm	3702	3870	4099	4304
295mm	3971	4152	4397	4617
320mm	4308	4504	4769	5008
350mm	4712	4926	5216	5478

#### 38 degrees

String Depth	String Thickness			
	28mm	32mm	38mm	44mm
220mm	2988	3124	3308	3473
225mm	3056	3195	3383	3552
245mm	3327	3479	3684	3868
275mm	3735	3905	4135	4342
295mm	4006	4189	4435	4658
320mm	4346	4543	4811	5052
350mm	4753	4969	5262	5526

**String dimensions: Grade D30 Type 2** Data based in inclusion of timber carriage (see page 58) and 2 kN UDL (see page 51)

### Grade D30 Type 2

#### 32 degrees

String Depth	String Thickness			
	28mm	32mm	38mm	44mm
220mm	3124	3266	3458	3631
225mm	3195	3340	3537	3714
245mm	3478	3637	3851	4044
275mm	3904	4082	4323	4539
295mm	4188	4379	4637	4869
320mm	4543	4750	5030	5282
350mm	4898	5121	5423	5695

#### 34 degrees

String Depth	String Thickness			
	28mm	32mm	38mm	44mm
220mm	3147	3290	3484	3659
225mm	3219	3365	3564	3742
245mm	3505	3664	3880	4075
275mm	3934	4113	4356	4574
295mm	4220	4412	4672	4906
320mm	4578	4786	5068	5322
350mm	4935	5160	5464	5738

#### 36 degrees

String Depth	String Thickness			
	28mm	32mm	38mm	44mm
220mm	3173	3317	3513	3689
225mm	3245	3393	3593	3773
245mm	3534	3694	3912	4108
275mm	3966	4147	4391	4611
295mm	4255	4448	4711	4946
320mm	4615	4825	5110	5366
350mm	4976	5202	5509	5785

#### 38 degrees

String Depth	String Thickness			
	28mm	32mm	38mm	44mm
220mm	3201	3347	3544	3721
225mm	3274	3423	3624	3806
245mm	3565	3727	3947	4144
275mm	4001	4183	4430	4652
295mm	4292	4488	4752	4990
320mm	4656	4868	5155	5413
350mm	5020	5248	5558	5836

## 6. Component dimensions and data tables

**String dimensions: Grade D30 Type 3** Data based in inclusion of timber carriage (see page 58) and 2 kN UDL (see page 51)

### Grade D30 Type 3

#### 32 degrees

String Depth	String Thickness			
	28mm	32mm	38mm	44mm
220mm	2873	3003	3180	3340
225mm	2938	3072	3253	3416
245mm	3199	3345	3542	3719
275mm	3591	3754	3975	4175
295mm	3852	4027	4265	4478
320mm	4178	4368	4626	4858
350mm	4570	4778	5060	5313

#### 34 degrees

String Depth	String Thickness			
	28mm	32mm	38mm	44mm
220mm	2894	3026	3204	3365
225mm	2960	3095	3277	3441
245mm	3223	3370	3569	3747
275mm	3618	3783	4006	4206
295mm	3881	4058	4297	4512
320mm	4210	4402	4661	4894
350mm	4605	4814	5098	5353

#### 36 degrees

String Depth	String Thickness			
	28mm	32mm	38mm	44mm
220mm	2918	3051	3231	3392
225mm	2984	3120	3304	3470
245mm	3250	3398	3598	3778
275mm	3648	3814	4038	4241
295mm	3913	4091	4332	4549
320mm	4244	4438	4699	4935
350mm	4642	4854	5140	5397

#### 38 degrees

String Depth	String Thickness			
	28mm	32mm	38mm	44mm
220mm	2944	3078	3259	3422
225mm	3011	3148	3333	3500
245mm	3278	3427	3630	3811
275mm	3680	3847	4074	4278
295mm	3947	4127	4370	4589
320mm	4282	4477	4741	4978
350mm	4683	4896	5185	5445

**String dimensions: Grade D40 Type 2** Data based in inclusion of timber carriage (see page 58) and 2 kN UDL (see page 51)

### Grade D40 Type 2

#### 32 degrees

String Depth	String Thickness			
	28mm	32mm	38mm	44mm
220mm	3302	3453	3656	3839
225mm	3377	3531	3739	3927
245mm	3678	3845	4072	4276
275mm	4128	4316	4570	4799
295mm	4428	4630	4903	5148
320mm	4803	5022	5318	5585
350mm	5179	5414	5734	6021

#### 34 degrees

String Depth	String Thickness			
	28mm	32mm	38mm	44mm
220mm	3327	3479	3684	3869
225mm	3403	3558	3768	3956
245mm	3706	3874	4103	4308
275mm	4159	4349	4605	4836
295mm	4462	4665	4940	5187
320mm	4840	5060	5359	5627
350mm	5218	5456	5777	6066

#### 36 degrees

String Depth	String Thickness			
	28mm	32mm	38mm	44mm
220mm	3355	3507	3714	3900
225mm	3431	3587	3799	3989
245mm	3736	3906	4136	4343
275mm	4193	4384	4643	4875
295mm	4498	4703	4980	5230
320mm	4880	5102	5402	5673
350mm	5261	5500	5824	6116

#### 38 degrees

String Depth	String Thickness			
	28mm	32mm	38mm	44mm
220mm	3384	3538	3747	3935
225mm	3461	3619	3832	4024
245mm	3769	3940	4173	4382
275mm	4230	4423	4684	4918
295mm	4538	4744	5024	5276
320mm	4923	5147	5450	5723
350mm	5307	5549	5876	6170

## 6. Component dimensions and data tables

**String dimensions: Grade D40 Type 3** Data based in inclusion of timber carriage (see page 58) and 2 kN UDL (see page 51)

### Grade D40 Type 3

#### 32 degrees

String Depth	String Thickness			
	28mm	32mm	38mm	44mm
220mm	3037	3175	3362	3531
225mm	3106	3247	3439	3611
245mm	3382	3536	3745	3932
275mm	3796	3969	4203	4414
295mm	4072	4258	4509	4735
320mm	4417	4619	4891	5136
350mm	4832	5052	5349	5617

#### 34 degrees

String Depth	String Thickness			
	28mm	32mm	38mm	44mm
220mm	3060	3199	3388	3558
225mm	3130	3272	3465	3638
245mm	3408	3563	3773	3962
275mm	3825	3999	4235	4447
295mm	4103	4290	4543	4770
320mm	4451	4654	4928	5175
350mm	4868	5090	5390	5660

#### 36 degrees

String Depth	String Thickness			
	28mm	32mm	38mm	44mm
220mm	3085	3226	3416	3587
225mm	3155	3299	3493	3668
245mm	3436	3592	3804	3994
275mm	3856	4032	4270	4483
295mm	4137	4325	4580	4809
320mm	4487	4692	4968	5217
350mm	4908	5132	5434	5706

#### 38 degrees

String Depth	String Thickness			
	28mm	32mm	38mm	44mm
220mm	3112	3254	3446	3618
225mm	3183	3328	3524	3701
245mm	3466	3624	3837	4030
275mm	3890	4067	4307	4523
295mm	4173	4363	4620	4852
320mm	4527	4733	5012	5263
350mm	4951	5177	5482	5756

**String dimensions: Grade D50 Type 2** Data based in inclusion of timber carriage (see page 58) and 2 kN UDL (see page 51)

### Grade D50 Type 2

#### 32 degrees

String Depth	String Thickness			
	28mm	32mm	38mm	44mm
220mm	3385	3539	3748	3935
225mm	3462	3619	3833	4025
245mm	3770	3941	4174	4383
275mm	4231	4424	4685	4919
295mm	4539	4746	5025	5277
320mm	4924	5148	5451	5724
350mm	5308	5550	5877	6171

#### 34 degrees

String Depth	String Thickness			
	28mm	32mm	38mm	44mm
220mm	3411	3566	3776	3965
225mm	3488	3647	3862	4055
245mm	3798	3971	4205	4416
275mm	4263	4457	4720	4957
295mm	4573	4782	5063	5317
320mm	4961	5187	5493	5768
350mm	5349	5592	5922	6218

#### 36 degrees

String Depth	String Thickness			
	28mm	32mm	38mm	44mm
220mm	3439	3595	3807	3998
225mm	3517	3677	3894	4089
245mm	3829	4004	4240	4452
275mm	4298	4494	4759	4997
295mm	4611	4821	5105	5361
320mm	5002	5229	5538	5815
350mm	5392	5638	5970	6269

#### 38 degrees

String Depth	String Thickness			
	28mm	32mm	38mm	44mm
220mm	3469	3627	3841	4033
225mm	3548	3709	3928	4125
245mm	3863	4039	4277	4491
275mm	4336	4533	4801	5041
295mm	4651	4863	5150	5408
320mm	5046	5275	5586	5866
350mm	5440	5687	6023	6324

## 6. Component dimensions and data tables

**String dimensions: Grade D50 Type 3** Data based in inclusion of timber carriage (see page 58) and 2 kN UDL (see page 51)

### Grade D50 Type 3

#### 32 degrees

String Depth	String Thickness			
	28mm	32mm	38mm	44mm
220mm	3113	3255	3447	3619
225mm	3184	3329	3525	3701
245mm	3467	3625	3838	4030
275mm	3891	4068	4308	4524
295mm	4174	4364	4621	4853
320mm	4528	4734	5013	5264
350mm	4952	5178	5483	5758

#### 34 degrees

String Depth	String Thickness			
	28mm	32mm	38mm	44mm
220mm	3137	3279	3473	3647
225mm	3208	3354	3552	3729
245mm	3493	3652	3867	4061
275mm	3921	4099	4341	4558
295mm	4206	4397	4657	4890
320mm	4562	4770	5051	5304
350mm	4990	5217	5525	5801

#### 36 degrees

String Depth	String Thickness			
	28mm	32mm	38mm	44mm
220mm	3162	3306	3501	3676
225mm	3234	3381	3581	3760
245mm	3522	3682	3899	4094
275mm	3953	4133	4376	4596
295mm	4240	4433	4695	4930
320mm	4600	4809	5093	5348
350mm	5031	5260	5570	5849

#### 38 degrees

String Depth	String Thickness			
	28mm	32mm	38mm	44mm
220mm	3190	3335	3532	3709
225mm	3263	3411	3612	3793
245mm	3553	3714	3933	4130
275mm	3988	4169	4415	4636
295mm	4278	4472	4736	4973
320mm	4640	4851	5137	5395
350mm	5075	5306	5619	5900

**String dimensions: Kerto Type 2** Data based in inclusion of timber carriage (see page 58) and 2 kN UDL (see page 51)

### Kerto Type 2

#### 32 degrees

String Depth	String Thickness			
	28mm	32mm	38mm	44mm
220mm	3369	3522	3730	3917
225mm	3445	3602	3815	4006
245mm	3752	3922	4154	4362
275mm	4211	4403	4662	4896
295mm	4517	4723	5001	5252
320mm	4900	5123	5425	5697
350mm	5283	5523	5849	6142

#### 34 degrees

String Depth	String Thickness			
	28mm	32mm	38mm	44mm
220mm	3394	3549	3758	3946
225mm	3471	3630	3843	4036
245mm	3780	3952	4185	4395
275mm	4243	4436	4698	4933
295mm	4552	4759	5039	5292
320mm	4937	5162	5466	5740
350mm	5323	5565	5893	6188

#### 36 degrees

String Depth	String Thickness			
	28mm	32mm	38mm	44mm
220mm	3422	3578	3789	3979
225mm	3500	3659	3875	4069
245mm	3811	3984	4219	4431
275mm	4278	4472	4736	4973
295mm	4589	4798	5080	5335
320mm	4978	5204	5511	5787
350mm	5367	5611	5942	6239

#### 38 degrees

String Depth	String Thickness			
	28mm	32mm	38mm	44mm
220mm	3452	3609	3822	4014
225mm	3531	3691	3909	4105
245mm	3845	4020	4257	4470
275mm	4315	4512	4778	5017
295mm	4629	4840	5125	5382
320mm	5021	5250	5560	5838
350mm	5414	5660	5994	6294

## 6. Component dimensions and data tables

**String dimensions: Kerto Type 3** Data based in inclusion of timber carriage (see page 58) and 2 kN UDL (see page 51)

### Kerto Type 3

#### 32 degrees

String Depth	String Thickness			
	28mm	32mm	38mm	44mm
220mm	3098	3239	3430	3602
225mm	3168	3313	3508	3684
245mm	3450	3607	3820	4011
275mm	3873	4049	4288	4502
295mm	4154	4343	4599	4830
320mm	4506	4711	4989	5239
350mm	4929	5153	5457	5730

#### 34 degrees

String Depth	String Thickness			
	28mm	32mm	38mm	44mm
220mm	3122	3264	3456	3629
225mm	3193	3338	3535	3712
245mm	3476	3635	3849	4042
275mm	3902	4080	4320	4536
295mm	4186	4376	4634	4866
320mm	4540	4747	5027	5279
350mm	4966	5192	5498	5774

#### 36 degrees

String Depth	String Thickness			
	28mm	32mm	38mm	44mm
220mm	3147	3290	3484	3659
225mm	3219	3365	3564	3742
245mm	3505	3664	3880	4075
275mm	3934	4113	4355	4574
295mm	4220	4412	4672	4906
320mm	4578	4786	5068	5322
350mm	5007	5235	5543	5821

#### 38 degrees

String Depth	String Thickness			
	28mm	32mm	38mm	44mm
220mm	3175	3319	3515	3691
225mm	3247	3395	3595	3775
245mm	3536	3697	3915	4111
275mm	3969	4149	4394	4614
295mm	4257	4451	4713	4949
320mm	4618	4828	5113	5369
350mm	5051	5281	5592	5872

### Construction Design and Management Regulations:

- **CDM 2015 Industry Guidance for Designers**

<http://www.citb.co.uk/documents/cdm%20regs/2015/cdm-2015-designers-interactive.pdf> (accessed on 16.11.16)

### Fire Safety:

- **The Regulatory Reform (Fire Safety) Order 2006**

<http://www.legislation.gov.uk/uksi/2005/1541/contents/made> (accessed on 21.11.16)

### British and European Stair Standards:

- **BS EN 15644:2008** Traditionally designed prefabricated stairs made of solid wood. Specifications and requirements.
- **BS 5395-1:2010** Stairs. Code of practice for the design of stairs with straight flights and winders constructed of wood-based materials.
- **BS 5395-2:1984** Stairs, ladders and walkways. Code of practice for the design of helical and spiral stairs.
- **BS 5395-4:2011** Code of practice for the design of stairs for limited access.

- **BS 6180:2011** Barriers in and about buildings. Code of practice.

- **BS EN 942:2007** Timber in joinery. General requirements.

- **BS EN 14076:2004** Timber stairs. Terminology.

### British and European Structural Standards:

- **BS EN 1995-1-1:2004+A1:2008** Eurocode 5. Design of timber structures. General. Common rules and rules for buildings.
- **NA to BS EN 1995-1-1:2004+A1:2008** UK National Annex to Eurocode 5. Design of timber structures. General. Common rules and rules for buildings.
- **PD 6688-1-1:2011** Recommendations for the design of structures to BS EN 1991-1-1.
- **prEN 16481** Timber stairs, structural design, calculation methods.
- **BS EN 1912:2012** Structural Timber — Strength classes — Assignment of visual grades and species.

### Test Standards:

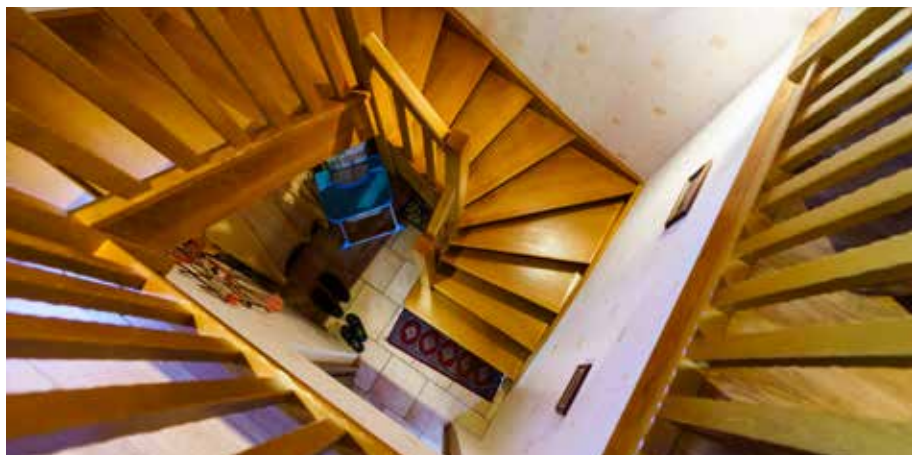
- **CEN/TS 15680:2007** Prefabricated timber stairs. Mechanical test methods.
  - **ETAG 008:2002** Guideline for European Technical Approval of prefabricated stair kits, Part 1 prefabricated stair kits in general, excluding severe climatic conditions
  - Published by the European Organisation for Technical Approvals (EOTA).
- BS EN 1365-6:2004 Fire resistance tests for load bearing elements. Stairs.

### CE marking of timber stairs:

- Stairs sold as complete kits can be CE marked through the EOTA guidance document ETAG 008 that has been superseded by EAD3400006-00-0506 Prefabricated stair kits. <https://www.eota.eu/en-GB/content/eads/56/>

### Fire classification and fire resistance:

- BS EN 13501-1:2007+A1:2009 Fire classification of construction products and building elements. Classification using test data from reaction to fire tests.



### Further information

#### **BWF Stair Scheme Design Guide 1: Private Stairs**

<http://c0284814.myzen.co.uk/wp-content/uploads/2014/10/BWF-Stair-Design-Guide.pdf>

#### **BWF Stair Scheme Installation Guide 1:**

<http://www.bwfstairscheme.org.uk/wp-content/uploads/2015/06/stair-installation-guide-web-ready-final11.pdf>

#### **BWF Stair Scheme Case Studies:**

<http://www.bwfstairscheme.org.uk/stair-design/case-studies/>

#### **BWF Stair Scheme Member register:**

<http://www.bwfstairscheme.org.uk/find-a-member/>

#### **BWF Stair Scheme Image Gallery:**

<http://www.bwfstairscheme.org.uk/stair-design/image-gallery/>



#### **For further technical guidance and CPD contact:**

BWF Stair Scheme  
26 Store Street  
London WC1E 7BT  
[bwf@bwf.org.uk](mailto:bwf@bwf.org.uk)

Accessibility.....	11	Joining of timber components .....	53, 54
Adhesives .....	48	Landings.....	36, 37
Balustrade .....	52, 54	Landing Obstruction.....	37
Baluster .....	52, 54	Length of Flight .....	22, 23
Bibliography .....	72, 74	Loadings.....	51, 52
British Standards.....	16, 72, 74	Materials and Workmanship.....	15
British Woodworking Federation .....	4, 5	Mechanical Strength of Timber .....	46
Building Regulations.....	9-17	Metal.....	48
BWF Stair Scheme .....	4, 5	Moisture Content.....	45
BWF Stair Scheme Badge.....	4, 5, 40, 43	Newel.....	57
BWF Stair Scheme Installation Guide .....	5, 6	NHBC .....	16
CDM .....	5, 16	Nosing .....	20, 28, 29
Child Safety .....	30	Nosing Dimension .....	28
Construction, Design and Management regulations .....	5, 16	Nosing Profile .....	28, 29
Corrosion .....	48	Open Risers.....	27
Deflection .....	51, 52	Pitch .....	20, 21, 27
Designer .....	5, 16	Protruding Nosing's.....	29
Durability .....	45	Reaction to Fire .....	41
Effective Clear Width.....	24, 25, 26	Regulatory Reform Order (2006) .....	43
Engineered Timber .....	47	Rise.....	20
European Standards.....	16, 72, 74	Scope of Document .....	5
Fire Compartmentation .....	41	Stair Classification.....	6, 7
Fire Safety .....	10, 39, 40, 41, 42, 43	Stair Dimensional Layout.....	18-38
Fire Protected Stair.....	40, 41, 42	Steepness of Stair .....	20, 21
Glass .....	48	Structural Stability .....	5, 17
Going .....	20	Soffit .....	27
Guarding.....	27, 30, 31-35	Tapered Treads .....	38
Handrails .....	30-34	Terminology .....	6, 19
Handrails Extensions.....	33	Timber Carriage.....	56, 58
Handrail Loading .....	52	Timber Species .....	46
Handrails Location .....	30-36	Timber Strength Classification .....	46
Handrails Height.....	31, 32	Third Party Accreditation.....	40
Handrails Profile .....	34	Winder .....	38
Handrails Wall Handrail Profile .....	34, 35	Wood Based Components .....	47
Headroom.....	27		
Heated Environment.....	45		



# **DESIGN GUIDE 2**

## **Common Timber Stairs**

**A Design Guide to Manufacturing  
Safe and Compliant Staircases**

The British Woodworking Federation  
26 Store Street  
London WC1E 7BT  
0844 209 2610  
[firedoors@bwf.org.uk](mailto:firedoors@bwf.org.uk)